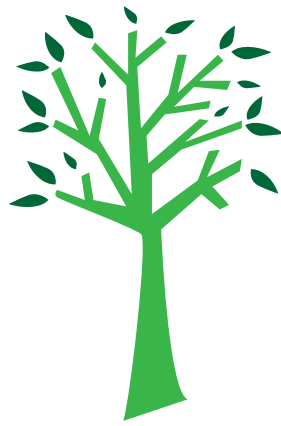




An International Learning Experience



# Sustainable Risk Rationalisation Conference 2010

## REGISTRATION BROCHURE

2 & 3 September 2010

Melbourne Convention and Exhibition Centre

Melbourne, Victoria, Australia

[www.srr-otek.com.au](http://www.srr-otek.com.au)

Brought to you by



Partnered with



Proudly sponsored by



Proudly supported by





# Sustainable Risk Rationalisation Conference 2010

## An International Learning Experience

2 & 3 September 2010  
Melbourne Convention and Exhibition Centre

### INVITATION



Dear Colleague,

For the past several years OTEK has staged the highly successful and attended Sustainable Risk Rationalisation (SRR) Conference that presents and discusses a range of critical issues in the Brownfield's environmental arena.

I am delighted to invite you and your colleagues to the **Sustainable Risk Rationalisation Conference 2010 - An International Learning Experience, to be held at the Melbourne Convention and Exhibition Centre (MCEC) in Melbourne, Australia, on the 2nd and 3rd of September 2010.**

I would ask that you put these dates aside and please complete the SRR 2010 Registration Form enclosed.

We have an outstanding line up of International premier speakers and business leaders who will share their experiences, knowledge and skills. Our MC's, Rick Marmur, CEO OTEK Australia, and Dean Jeffery Telego, President RTM Communications Inc., will be introducing some of the world's most profound professionals.

I look forward to meeting you in Melbourne, Australia, at the SRR 2010 - An International Learning Experience.

Best regards,

Ken V. Loughnan AO  
Chairman, OTEK Australia

### OVERVIEW

**Name:** Sustainable Risk Rationalisation Conference 2010 – An International Learning Experience

**Conference:** 2 – 3 September 2010 at Melbourne Convention and Exhibition Centre, Melbourne, Australia

**Welcome Cocktail Party:** Wednesday 1 September 2010 at Red Desert Dreamings Gallery

**Conference Dinner:** Thursday 2 September 2010 at Crown Entertainment Complex

**Sponsorship:** Available (please visit [www.srr-otek.com.au](http://www.srr-otek.com.au))

**Exhibition:** 2 – 3 September 2010 in MCEC room foyer

**Web:** [www.srr-otek.com.au](http://www.srr-otek.com.au)





# Sustainable Risk Rationalisation Conference 2010

An International Learning Experience

2 & 3 September 2010

Melbourne Convention and Exhibition Centre

## ABOUT THE SUSTAINABLE RISK RATIONALISATION CONFERENCE 2010 - AN INTERNATIONAL LEARNING EXPERIENCE

The SRR 2010 Conference has developed over the past three years into one of the most important and unique Australian based conferences due to its hands-on and practical approach to risk rationalisation within the Brownfield's environmental arena.

SRR 2010 brings Australian, American and Chinese industry practitioners together to focus on current issues and to discuss the various learning's experienced across a number of countries and environments.

SRR 2010 will provide international insights into the mitigation of risk within the Brownfield's arena with respect to a range of issues including:

- **International Keynote Addresses - Australia, USA and China**
- **Regulatory Development**
- **Technical and Remediation**
- **Environmental Due Diligence**
- **Corporate Perspective**
- **International Brownfield Developments - Case Studies**
- **Finance - Public and Private Sector, Tax Incentives**
- **Infrastructure and Redevelopment**
- **Insurance Risks**
- **Legal Perspective**
- **Innovative Building and Land Management**

The conference approach is very much about the delivery of information based on a simple hands-on approach, allowing delegates to gain professional advice through interactive sessions and presentations along with a number of social events and activities which will encourage networking opportunities.

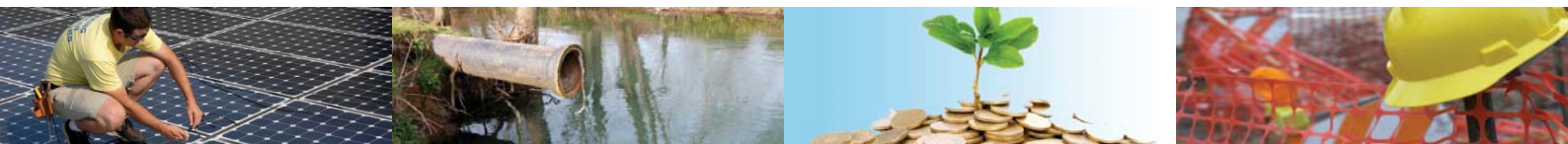
This is a boutique conference and exhibition that has proved to be incredibly valuable to participants. However, the number of delegates, sponsors and exhibitors are limited, so if you want to participate in this event it is advisable to complete your registration early.

Please forward this document to your colleagues within your organisation.

## WHO SHOULD ATTEND?

If you are interested in innovative environmental solutions you need to attend this conference.

- Business Development Manager
- Chief Executive Officer
- Chief Financial Officer
- Divisional General Manager
- Engineer
- Environment Manager
- Executive Assistant
- Marketing Manager
- Operations Manager
- Partner
- Planning Manager
- Project Manager
- Property Manager
- Risk Manager
- Senior Management





# Sustainable Risk Rationalisation Conference 2010

## An International Learning Experience

2 & 3 September 2010  
Melbourne Convention and Exhibition Centre

### WEDNESDAY, 1 SEPTEMBER

### PRE-CONFERENCE

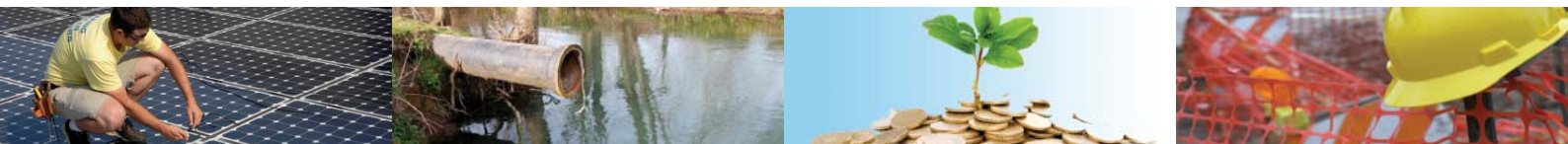
2.00pm - 6.30pm	<b>Pre-Registration Desk Opens</b> The SRR 2010 Registration Desk will be open for conference pre-registration and to collect your name tag, conference satchel and handbook.	MCEC Organisers Office Level 1, Room 101
6.30pm - 8.00pm	<b>Welcome Cocktail Party</b> Meet the SRR presenters and fellow delegates at the launch of the Sustainable Risk Rationalisation Conference 2010. Proudly sponsored by Enviropacific Services	Hilton South Wharf Red Desert Dreamings Gallery Level 4



### THURSDAY, 2 SEPTEMBER

### DAY 1

7.00am - 8.30am	<b>Registration Desk Opens</b> The SRR 2010 Registration Desk will be open for conference registration and to collect your name tag, conference satchel and handbook.	MCEC Organisers Office Level 1, Room 101
7.30am	<b>Exhibition Opens</b>	MCEC Level 1 Foyer
7.30am - 8.00am	<b>Arrival Tea/Coffee</b> Proudly sponsored by Thies Services	MCEC Level 1 Foyer
8.00am - 8.30am	<b>Welcome Address</b> <b>Ken V. Loughnan AO</b> , Chairman - OTEK Australia <b>Rick Marmur</b> , CEO - OTEK Australia <b>Jeff Telego</b> , President - RTM Communications, Inc.	MCEC Room 109/110
8.30am - 10.15am	<b>Keynote Address</b> <b>Terry Tamminen</b> , Former California EPA Secretary and Chief Environmental Policy Advisor to Governor Schwarzenegger (USA) <b>Topic: The Keys to Brownfields Success — From Shakespeare to Schwarzenegger.</b> The secrets to success in business and public policy, especially with respect to Brownfields restoration, based on real world experiences that Terry learned from performing plays by Shakespeare, serving in the Cabinet of Governor Arnold Schwarzenegger, and living around the world in places like Nigeria, Australia, and California.	MCEC Room 109/110





# Sustainable Risk Rationalisation Conference 2010

## An International Learning Experience

2 & 3 September 2010  
Melbourne Convention and Exhibition Centre

THURSDAY, 2 SEPTEMBER

DAY 1

**Innes Willox**, Director of International and Government Relations - Australian Industry Group (Australia)

**Topic: Industry and the Sustainability Agenda – Challenges and Opportunities**

Overview of the sustainability issues which have assumed centre-stage in Australian public policy; discussion of some of the key drivers and challenges of brownfields development; identifying the needs of industry in responding to challenges and taking advantage of the opportunities.

**Chinese Keynote Address, TBA (China)**

10.15am - 10.30am

**Morning Tea**

Proudly sponsored by Thies Services



MCEC  
Level 1 Foyer

10.30am - 12.50pm

**Legal Panel**

**Robert Jamieson & Jane Hall**, Partner & Senior Associate - Blake Dawson (Australia)

**Topic: A legal perspective on turning brown to green in Australia.**

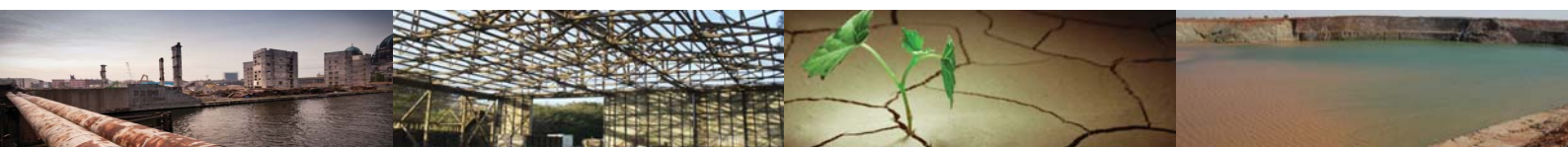
Overview of liability for brownfields sites; Impact of the planning system; Purchasing a brownfields site: disclosure obligations of seller, the limitations of contractual risk management, and the special position in South Australia, obligation to report contamination to regulators; Some case studies where it didn't quite go right!

**Laurence S. Kirsch**, Partner - Goodwin Procter LLP (USA)

**Topic: Innovative Approaches to Environmental Due Diligence/Auditing for Merger and Acquisitions.**

What are the kinds of cost, losses and liabilities facing buyers, sellers, lenders and investors involving distressed asset transactions. What are the environmental and occupational health issues and obligations involving environmental due diligence and disclosure of sellers to buyers, to regulatory agencies such as the US Environmental Protection Agency or Securities and Exchange Commission? What are some of the issues and potential obstacles working with government entities and public scrutiny/communities? Suggestions for Due Diligence and Responses to Transactional Challenges. Case study of an international M&A transaction.

MCEC  
Room 109/110





# Sustainable Risk Rationalisation Conference 2010

## An International Learning Experience

2 & 3 September 2010  
Melbourne Convention and Exhibition Centre

**THURSDAY, 2 SEPTEMBER**

**DAY 1**

**Jennifer Hernandez, Partner - Holland & Knight (USA)**

**Topic: *The Legal Perspective on Approaches to Sustainable and Brownfield Redevelopment.***

The role of the Redevelopment Agency, state and Federal government in structuring a brownfield program. Brownfield reforms affect on real estate transactions in California as compared with other state programs. Managing distressed assets and navigating the acquisition and sustainable development of brownfield type properties. Reflect on some of the current day issues such as entitlement risk and the role and power of local government and NGOs in the brownfield process. The synergies and obstacles of private developers and corporations working with state (DTSC and Water Board) and federal government entities. Role of climate change and energy efficiency on sustainable property transactions and brownfield redevelopment. Use of different public financing and risk management tools and the development, Implementation and enforcement of land use controls and risk based cleanups.

**Beatrice Schaffrath, Partner - Baker & McKenzie (China)**

### Legal Perspective Q & A

12.50pm - 1.35pm

**Networking Lunch**

*Sponsorship available*

MCEC

Level 1 Foyer

1.35pm - 3.35pm

**Finance Panel**

**Mathew Herring, R&D Incentives Partner - KPMG (Australia)**

**Charlie Bartsch, Vice President and Senior Fellow for Human Services and Community Development - ICF International (USA)**

**Wayne Mo, Director - Natural Resources Group - ANZ (Australia/China)**

**Topic: *Chinese investment into Australia Resources Sector and its funding sources.***

Huge growing demand - Background and Rationales of Chinese investment. Recent deal flows and its analysis. How to finance those project? China Inc vs Commercial. Importance of Professional Financial Services

**Jeff Telego, President - RTM Communications, Inc. (USA)**

**Topic: *Overview of the US Picture on the Private Equity and Debt Financing for Commercial Real Estate and Brownfield Sites.***

Distressed Assets and Opportunities, where are the trends in redevelopment. National perspective on market trends and issues affecting commercial real estate. Transactional trends to counter distressed assets market and alternative deal structures. Environmental due diligence/risk management for sustainable property transactions.

### Finance Q & A





# Sustainable Risk Rationalisation Conference 2010

## An International Learning Experience

2 & 3 September 2010  
Melbourne Convention and Exhibition Centre

**THURSDAY, 2 SEPTEMBER**

**DAY 1**

3.35pm - 3.50pm	<p><b>Afternoon Break</b></p> <p>Proudly sponsored by Thies Services</p>		<p>MCEC Level 1 Foyer</p>
3.50pm	<p><b>Exhibition Closes</b></p>		<p>MCEC Level 1 Foyer</p>
3.50pm - 4.50pm	<p><b>Insurance Risks</b></p> <p><b>Mike Baker</b>, Vice President Casualty Asia Pacific - Liberty International Underwriters (Australia/Asia)</p> <p><b>Topic: Environmental Liability Insurance – An Overview.</b></p> <p>Overview of Environmental Products in the Australian marketplace. LIU experience (utilising case studies). LIU Asia experience and trends.</p> <p><b>Simone Rollason</b>, Chartis Insurance (Australia)</p> <p><b>Topic: Insurance options to mitigate risk for stakeholders undertaking environmental clean-ups.</b></p> <p>The Types of Stakeholders Involved in Environmental Insurance. Professional Indemnity Insurance. Public and Pollution Liability Insurance. The Importance of QA/QC and Uninsured Risks.</p> <p><b>Insurance Q &amp; A</b></p>		<p>MCEC Room 109/110</p>
4.50pm - 5.20pm	<p><b>Corporate Perspective - China</b></p> <p><b>Dr. DENG Xiaowen</b>, Senior Environmental Engineer - Tianjin United Environmental Protection Engineering Design Co, Ltd. (China)</p>		<p>MCEC Room 109/110</p>
5.20pm - 5.30pm	<p><b>Day 1 Closing Address</b></p> <p><b>Rick Marmur</b>, CEO - OTEK Australia</p> <p><b>Jeff Telego</b>, President - RTM Communications, Inc.</p>		<p>MCEC Room 109/110</p>
6.30pm - 10.30pm	<p><b>Conference Dinner</b></p> <p>Take a short walk to the Crown Casino &amp; Entertainment Complex along the banks of the Yarra River.</p> <p>Attendees are welcomed to pre-dinner drinks followed by Melbourne's finest cuisine and local wines.</p> <p>The Conference Dinner is a significant social gathering offering further opportunities for delegates, speakers and sponsors to network in a relaxed atmosphere.</p> <p><i>Sponsorship available</i></p>		<p>Crown Casino &amp; Entertainment Complex River Room</p>





# Sustainable Risk Rationalisation Conference 2010

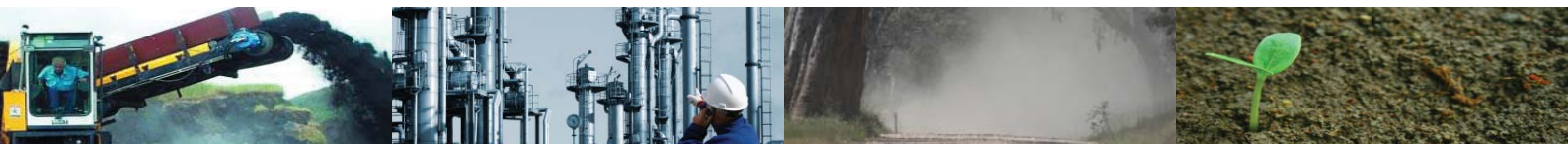
## An International Learning Experience

2 & 3 September 2010  
Melbourne Convention and Exhibition Centre

**FRIDAY, 3 SEPTEMBER**

**DAY 2**

7.30am - 8.20am	<b>Registration Desk Opens</b> The SRR 2010 Registration Desk will be open for conference registration and to collect your name tag, conference satchel and handbook.	MCEC Organisers Office Level 1, Room 101
7.30am	<b>Exhibition Opens</b>	MCEC Level 1 Foyer
7.30am - 8.00am	<b>Arrival Tea/Coffee</b> Proudly sponsored by Thies Services	 MCEC Level 1 Foyer
8.00am - 8.20am	<b>Welcome Address</b> <b>Rick Marmur</b> , CEO - OTEK Australia <b>Jeff Telego</b> , President - RTM Communications, Inc.	MCEC Room 109/110
8.20am - 9.50am	<b>Regulatory Development Panel</b> <b>Dr. Paul Vogel</b> , Chairman - Environmental Protection Authority WA (Australia) <i>Topic: How environmental impact assessment can avoid, reduce and manage contamination risks.</i>  <b>Andrew Pruszinski</b> , Principal Advisor Site Contamination - Environmental Protection Authority SA (Australia) <i>Topic: Remediation to the extent necessary – is it cutting edge or just parochial?</i> The SA Environment Protection Authority (EPA) has for many years advocated risk based decision making, especially with respect to assessment and remediation. These concepts are reflected in the legislation. For many people remediation means clean-up, remove, “dig and dump” or “pump and treat” or maybe monitored natural attenuation. These approaches can sometimes be far away from risk based and is also generally not consistent with the waste management hierarchy: For the remediation of underground water, the SA EPA has developed a unique concept, being “remediate to the extent necessary” or RTEN. RTEN allows a person to treat, contain, manage or remove the site contamination to the point of necessity, based on risk assessment.  <b>DONG Zhiyuan</b> , Deputy Director - Tianjin Environmental Protection Bureau (China)  <b>Regulator Q &amp; A</b>	MCEC Room 109/110





# Sustainable Risk Rationalisation Conference 2010

## An International Learning Experience

2 & 3 September 2010  
Melbourne Convention and Exhibition Centre

FRIDAY, 3 SEPTEMBER

DAY 2

9.50am - 10.50am

**Environmental Due Diligence**

MCEC

Room 109/110

**Julie Kilgore, President - Wasatch Environmental (USA)**

**Topic: A US National Perspective on the Use of Environmental Due Diligence for Brownfield Transactions.**

Brownfield sites and the practice of risk based site cleanups of distressed assets. The development and role of industry wide standards for environmental due diligence standards. The application of environmental due diligence for Phase I and II site investigations and characterizations. Approaches to risk based cleanups, working with industry and government entities. Case study(s) of a brownfield site investigation using industry standards for Phase I and II environmental due diligence and risk based cleanup standards. Using institutional and engineered controls for site redevelopment.

10.50am - 11.05am

**Morning Break**

Proudly sponsored by Thies Services



MCEC

Level 1 Foyer

11.05am - 1.05pm

**International Brownfield Developments**

MCEC

Room 109/110

**Tom Graze, Infrastructure and Development Advisor - VicUrban (Australia)**

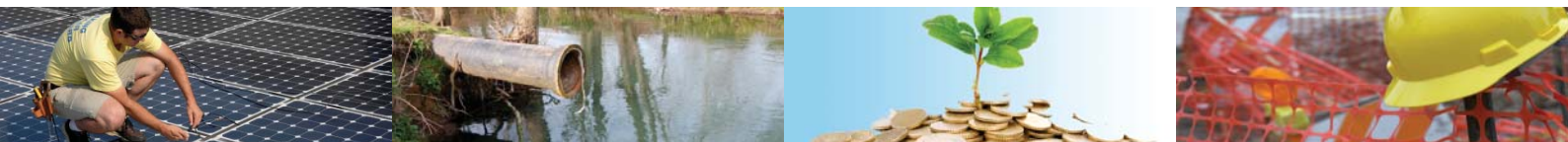
**Topic: From brownfield industrial to green star city - the Melbourne Docklands Story**

**Ignacio Dayrit, Director Programs - Centre for Creative Land Recycling (USA)**

**Topic: Brownfields & municipal government: Challenges & Solutions.**

Brownfields challenges unique to municipal government. Case study: The City of Emeryville, California Development Agency role in structuring a comprehensive brownfield program. Financing - securing financing for investigation, cleanup and redevelopment. Regulation - working with state and federal government regulatory entities to streamline procedures and develop risk based cleanups and cleanup standards. Partnership outreach - Shared learning to discover constraints, obstacles, goals, resources and synergies. Assurance - Implementing and enforcing land use controls (LUCIP). Integration of environmental, economic and social sustainability in planning and implementation. Reflections on current issues such as entitlement risk, the role and power of local government, NGOs in the brownfields process, and GHG and brownfields connection.

**SUN Yichao, Director of Institute of Ecology - Tianjin Academy of Environmental Sciences (China)**





# Sustainable Risk Rationalisation Conference 2010

## An International Learning Experience

2 & 3 September 2010  
Melbourne Convention and Exhibition Centre

FRIDAY, 3 SEPTEMBER

DAY 2

**Dr. John Hunt**, Technical Services Manager Remediation - Thiess Services (Australia)

**Topic: Managing remediation risks and achieving sustainable outcomes - a tale of two sites.**

The Allied Feeds and Lednez sites on the Rhodes Peninsula in Sydney which contain scheduled chemicals such as dioxins and OCPs were remediated using thermal desorption technology. One site was cleaned up to meet published or regulatory treatment and soil reuse criteria. The other was cleaned up to meet best practice treatment criteria and site specific reuse criteria. This presentation compares the remediation outcomes for each site in terms of sustainability and project risk management.

### International Brownfield Developments Q & A

1.05pm - 2.35pm

### Lunch With Terry Tamminen

MCEC  
Room 105/106

Join us for a quality sit-down lunch and learn Terry Tamminen's first hand experiences with the Californian Government and his role as Governor Schwarzenegger's environmental policy advisor.

"Terry Tamminen...is probably the most brilliant guy around when it comes to the environment," says Governor Arnold Schwarzenegger.

*Sponsorship available*

2.35pm

### Exhibition Closes

MCEC  
Level 1 Foyer

2.35pm - 3.35pm

### Infrastructure and Redevelopment

MCEC  
Room 109/110

**Dr. Peter Gehrke**, Australian Manager - Natural Resources - Snowy Mountain Engineering Corporation (SMEC) (Australia)

**Topic: Brownfield sustainability targets: hit or myth?**

The concept of sustainability has become so mainstream in recent years that its meaning has been lost, and is now used by different people to convey different messages; This presentation explores different meanings of sustainability to better define its usefulness in setting targets for redevelopment and rehabilitation of industrial sites, and to manage the risks involved; A case study will be used to demonstrate development of operational and long-term rehabilitation targets for a contaminated sand quarry lake affected by high nutrient loads, acid sulfate soils, complex groundwater interactions, and human health risks from toxic cyanobacteria.

**Grant Scott**, Director - OTEK Australia (Australia)

**Topic: Limiting exposure from contaminated assets.**

The process of managing impaired sites have many risks for the vendor and the purchaser. This presentation presents practical proven approaches to managing the environmental, legal, regulatory, economic risks associated with contaminated sites.





# Sustainable Risk Rationalisation Conference 2010

## An International Learning Experience

2 & 3 September 2010  
Melbourne Convention and Exhibition Centre

FRIDAY, 3 SEPTEMBER

DAY 2

3.35pm - 4.05pm

Innovative Building and Land Management

MCEC

Room 109/110

**Willy Accame**, Director Risk Management and Environment - Panattoni Development Company (USA)

**Topic: International Developer Perspective on Using Environmental Risk Management Strategies for Innovative Brownfield Redevelopments.**

Life of a deal, initial feasibility analysis, budgeting for uncertainties, Role of environmental due diligence, risk management planning and structuring of the transactions/removing contingent liabilities. Underwriting/manuscripting insurance coverages and structuring a comprehensive indemnity program. Integrating sustainable development in major vertical development projects. Case study of an industrial/commercial brownfield redevelopment.

4.05pm - 5.05pm

Technical and Remediation

MCEC

Room 109/110

**Richard Scofield**, Director - Global Environmental Management (Former BP Global Remediation Manager) (Australia/USA)

**Topic: Autopsy of a Petroleum Hydrocarbon Brownfield Site.**

Generic History of Site: Site Layout and Geology, Summary of Remedial and Related Environmental Costs, and Legal Requirements; Site Remediation and Restoration; Free and Dissolved Residual Contamination Findings and Implications; Audit and VIC EPA Regulatory Requirements; CUTEP Summary; Sustainable Remediation at what costs?; Obtaining Site Closure – Is it Achievable?

**Colin Johnston**, Principal Research Scientist - Land and Water - CSIRO (Australia)

**Topic: Air injection and extraction for enhancing remediation of petroleum hydrocarbon LNAPL and risk reduction**

A number of field trials have demonstrated the increased efficacy of air injection and extraction remediation schemes. These schemes are naturally suited to addressing risks from volatile constituents of petroleum hydrocarbons. Soil vapour extraction, air sparging and biosparging have demonstrated effectiveness in removing volatile risk drivers. Air extraction during free-LNAPL recovery (vacuum-enhanced recovery) increases liquid recovery as well as promoting removal through volatilisation and biodegradation. Managing the volatile emissions from these remediation schemes is critical for their economic viability.

5.05pm - 5.30pm

Conference Closing Address

MCEC

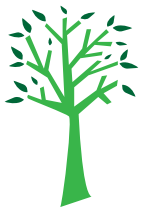
Room 109/110

**Ken V. Loughnan AO**, Chairman - OTEK Australia

**Rick Marmur**, CEO - OTEK Australia

**Jeff Telego**, President - RTM Communications, Inc.





# Sustainable Risk Rationalisation Conference 2010

An International Learning Experience

2 & 3 September 2010

Melbourne Convention and Exhibition Centre

## PRESENTERS

The Presenters have been specifically chosen for their impressive quality, extensive experience and expertise in their relevant field. They compliment the streams and hands-on direction of the SRR 2010 conference.



**Terry Tamminen - USA**

Former Secretary of California EPA and Chief Environmental Policy Advisor to Governor Schwarzenegger

*Stream: Keynote - From Shakespeare to Schwarzenegger*



**Andrew Pruszinski - Australia**

EPA SA, Principal Advisor Site Contamination

*Stream: Regulatory Development*



**Innes Willox - Australia**

Australian Industry Group, Director - International and Government Relations

*Stream: Keynote*



**Ignacio Dayrit - USA**

Centre for Creative Land Recycling, Director Programs

*Stream: International Brownfield Developments*



**Rick Marmur - Australia**

O TEK, CEO

*Stream: MC*



**SUN Yichao - China**

Tianjin Academy of Environmental Sciences, Director of Institute of Ecology

*Stream: International Brownfield Developments*



**Dean Jeffery Telego - USA**

RTM Communications Inc., President EBA, Executive Co-Director

*Stream: MC and Private Equity and Debt Financing - USA Overview*



**Julie Kilgore - USA**

Wasatch Environmental, Principal

*Stream: Environmental Due Diligence*



**Dr. Paul Vogel - Australia**

EPA WA, Chairman

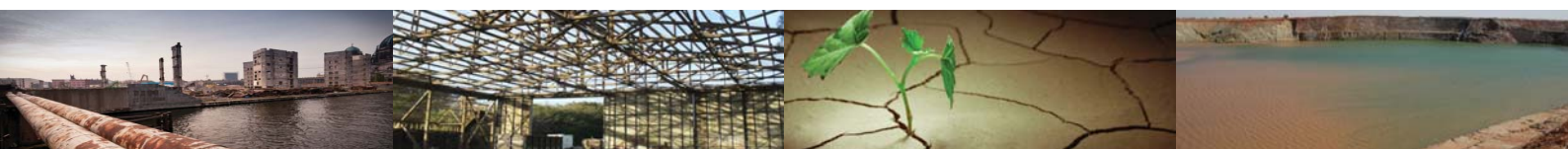
*Stream: Regulatory Development*



**Richard Scofield - Australia / USA**

Corporate Environmental Management, Director (Former BP Global Remediation Manager)

*Stream: Technical and Remediation*





# Sustainable Risk Rationalisation Conference 2010

An International Learning Experience

2 & 3 September 2010

Melbourne Convention and Exhibition Centre

## PRESENTERS



**Colin Johnston - Australia**

CSIRO, Principal Research Scientist

*Stream: Technical and Remediation*



**Guillermo (Willy) Accame - USA**

Panattoni Development Company,  
Director - Risk Management and  
Environment

*Stream: Innovative Building and Land  
Management*



**Grant Scott - Australia**

OOTEK, Director

*Stream: Infrastructure and  
Redevelopment - Positive Liability  
Transfer (PLT)*



**Simone Rollason - Australia**

Chartis Insurance, Senior Underwriter

*Stream: Insurance Risks*



**Laurence S. Kirsch - USA**

Goodwin Procter LLP, Partner

*Stream: Legal Perspective*



**Dr. DENG Xiaowen - China**

Tianjin United Environmental Protection  
Engineering Design Co. Ltd, Senior  
Environmental Engineer

*Stream: Corporate Perspective*



**Jennifer L. Hernandez - USA**

Holland & Knight, Partner

*Stream: Legal Perspective*



**Wayne Mo - Australia / China**

ANZ, Director - Natural Resources  
Group Institutional Relationships

*Stream: Finance - Private Sector  
Funding*



**Robert Jamieson - Australia**

Blake Dawson, Partner

*Stream: Legal Perspective*



**Charlie Bartsch - USA**

ICF International, Vice President and  
Senior Fellow for Human Services and  
Community Development

*Stream: Public Finance and Tax  
Incentives - USA Experience*





# Sustainable Risk Rationalisation Conference 2010

An International Learning Experience

2 & 3 September 2010

Melbourne Convention and Exhibition Centre

## PRESENTERS



**Mathew Herring - Australia**

KPMG, R&D Incentives Partner

*Stream: Finance - Tax Incentives - An Australian Experience*



**Dr. Peter Gehrke - Australia**

SMEC, Australian Manager Natural Resources

*Stream: Infrastructure Support Required For Brownfield Sites*



**Tom Graze - Australia**

VicUrban, Infrastructure and Development Advisor

*Stream: International Brownfield Developments*



**Jane Hall - Australia**

Blake Dawson, Senior Associate

*Stream: Legal Perspective*



**Dr. John Hunt - Australia**

Thiess Services, Technical Services Manager Remediation

*Stream: International Brownfields Developments*

**DONG Zhiyuan - China**

EPB - Tianjin, Deputy Director

*Stream: Regulatory Development - Chinese Experience*



**Mike Baker - Australia**

Liberty International Underwriters, Vice President - Casualty Asia Pacific

*Stream: Insurance Risks*



**Beatrice M. Schaffrath - China**

Baker & McKenzie - Beijing Office, Partner

*Stream: Legal Perspective*





# Sustainable Risk Rationalisation Conference 2010

## An International Learning Experience

2 & 3 September 2010  
Melbourne Convention and Exhibition Centre

### MELBOURNE - THE PLACE TO BE

Melbourne is Victoria's capital city and the business, cultural, sporting and recreational hub of the state.

Melbourne recently was awarded the Sporting Capital of the world, and is regularly voted in the top 10 most livable cities in the world.

Melbourne is set around the shores of Port Phillip Bay and sits on the northern banks of the Yarra River. With Melbourne's picturesque surroundings, it boasts a lively and cosmopolitan pulse creating an unforgettable experience for all those who travel Down Under.

There are a diverse range of activities, events, international food and wine, arts and culture, sports, entertainment, shopping and nature and wildlife.

For more information about Melbourne please visit [www.visitmelbourne.com](http://www.visitmelbourne.com) or [www.melbourne.vic.gov.au](http://www.melbourne.vic.gov.au).



### SRR 2010 CONFERENCE VENUE - MELBOURNE CONVENTION AND EXHIBITION CENTRE (MCEC)

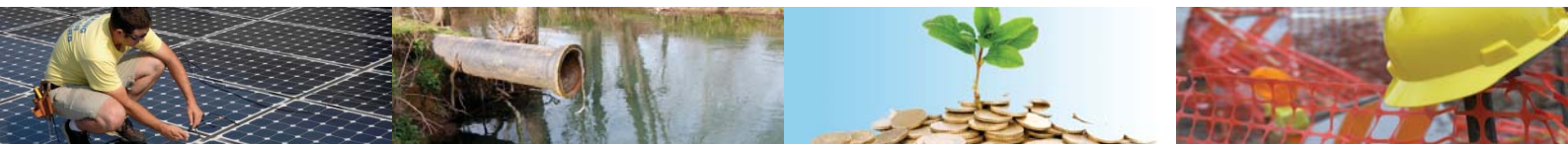
The Melbourne Convention and Exhibition Centre (MCEC) is the most versatile, environmentally friendly and advanced convention and exhibition centre in the Southern Hemisphere.

Setting new world benchmarks as the first convention centre to be awarded a '6 Star Green Star' environmental rating by the Green Building Council of Australia, the centre is also raising standards to new heights in innovation, technology, imaginative catering and service options.

The MCEC is Australia's premier convention centre and is conveniently located in the heart of Melbourne, Victoria.

It is easily accessible by foot, car or public transport and is surrounded by cafes, bars, shopping and fine restaurants.

Please visit [www.mcec.com.au](http://www.mcec.com.au) for more information.





# Sustainable Risk Rationalisation Conference 2010

## An International Learning Experience

2 & 3 September 2010  
Melbourne Convention and Exhibition Centre

### SOCIAL & NETWORKING FEATURES

#### **SRR 2010 Welcome Cocktail Party - Red Desert Dreamings Aboriginal Art Gallery** **Wednesday, 1 September 2010 - 6:30pm - 8:00pm**

The Sustainable Risk Rationalisation Conference 2010 - An International Learning Experience will be launched with a Welcome Cocktail Party at the Red Desert Dreamings Aboriginal Art Gallery located at the Hilton Melbourne South Wharf.



Red Desert Dreamings Gallery displays and sells Fine Aboriginal Art (predominantly from the Western Desert area of Central Australia near Alice Springs), and selected high quality Glass Art pieces, painted and created by talented Aboriginal artists.

The Gallery displays outstanding collection pieces and offers a combination of high-end and affordable art works, also for sale with a 10% discount for delegates and guests throughout the evening and conference period.

Please join your fellow attendees, colleagues and presenters for Australian-style canapes and local beverages, surrounded by this unique and networking cultural experience, as the Sustainable Risk Rationalisation Conference 2010 - An International Learning Experience begins.

Welcome Cocktail Party tickets are included in the Early Bird Registration and Full Regular Registration. Additional Welcome Cocktail Party tickets may be purchased for A\$77 (including GST) when registering (maximum 1 per delegate registration).

#### **SRR 2010 Conference Dinner - Crown Entertainment Complex** **Thursday, 2 September 2010 - 6:30pm - 10:30pm**

SRR 2010 delegates are invited to join fellow attendees, colleagues and presenters at the Conference Dinner located in the River Room at the Crown Entertainment Complex.



SRR 2010 Conference Dinner tickets are included in the Early Bird Registration, Full Regular Registration and Day One Registration. Additional SRR 2010 Conference Dinner tickets are available and may be purchased for A\$155 (including GST) when completing the conference registration form (maximum 1 per delegate registration).

Attendees are welcomed by pre-dinner drinks at 6:30pm followed by Melbourne's finest cuisine and local wines, complimented by exceptional views of Melbourne along Southbank.

Crown Casino is only a short walk from Melbourne Convention and Exhibition Centre and Hilton Melbourne South Wharf and is renowned as one of Melbourne's most sophisticated and cosmopolitan venues, boasting its incredible variety of entertainment options.

The SRR 2010 Conference Dinner is a significant social gathering offering further opportunities for delegates, speakers, sponsors and exhibitors to network in a relaxed atmosphere.





# Sustainable Risk Rationalisation Conference 2010

## An International Learning Experience

2 & 3 September 2010  
Melbourne Convention and Exhibition Centre

### SOCIAL & NETWORKING FEATURES

#### SRR 2010 Lunch With Governor Schwarzenegger's Environmental Guru - Melbourne Convention and Exhibition Centre Friday, 3 September 2010

Enjoy a quality lunch with quality company and learn from a quality speaker at the SRR 2010 Lunch With Governor Schwarzenegger's Environmental Guru, Terry Tamminen.

Attendees are welcomed to a sit-down, informal networking lunch with Terry Tamminen.



"Terry is among the sublime visionaries of the modern environmental era. He is a master strategist and skilled administrator whose judgment and innovation steered Governor Arnold Schwarzenegger's progressive environmental agenda. Today, Terry is playing a key leadership role in guiding our country to the energy independence, sustainability and prosperity promised by the new energy economy." — Robert F. Kennedy Jr., Environmental Lawyer.

"Arnold Schwarzenegger may have signed the world's toughest anti-global-warming law, but it is Terry Tamminen, his environmental adviser, who is emerging as the state's real [global warming] Terminator." (TIME Magazine, April 9, 2007).

"Terry Tamminen...is probably the most brilliant guy around when it comes to the environment," says Governor Arnold Schwarzenegger.

SRR 2010 Lunch tickets are included in the Early Bird Registration, Full Regular Registration and Day Two Registration, Student Full Registration and Student Day Two Registration.

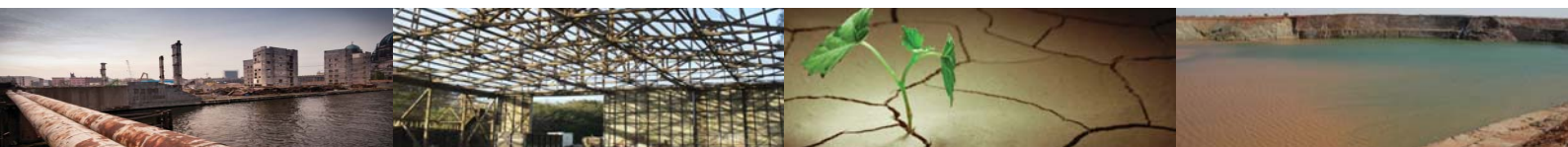
Additional SRR 2010 Lunch tickets are available and may be purchased for A\$145 (including GST) when completing the conference registration form (maximum 1 per delegate registration).

#### SRR 2010 Exhibition

A small exhibition area will be staged in conjunction with the conference to provide further education sharing and networking opportunities.

The exhibition will be set up in the coffee break, morning and afternoon tea, and day one lunch area located in the foyer directly outside the conference room.

Limited exhibition space is available for purchase with sponsorship and full details are on the SRR web site, [www.srr-otek.com.au](http://www.srr-otek.com.au).





# Sustainable Risk Rationalisation Conference 2010

## An International Learning Experience

2 & 3 September 2010  
Melbourne Convention and Exhibition Centre

### ACCOMMODATION - HILTON MELBOURNE SOUTH WHARF

Set in the heart of South Wharf, an area set to become Melbourne's newest business and dining precinct, the stylish Hilton Melbourne South Wharf hotel is located conveniently close to the airport and the cosmopolitan city centre.

Each contemporary Guest Room has been innovatively designed and are inspired by the iconic Yarra River.

Offering panoramic views of either the bay or the bustling city, every accommodation features a flat screen LCD TV.



As the only hotel with direct access to the Melbourne Convention and Exhibition Centre, guests attending the conference will be able to walk directly to the SRR 2010 conference venue at the MCEC's modern conference and event facilities from within the hotel.

Relax with business associates after the conference in Sotano Wine + Tapas to sample authentic Catalan tapas and choose from over 500 vintages from the show-stopping wine gantry, or energise with a workout in the complimentary Fitness Centre with world-class Precor gym equipment.

The Hilton Melbourne South Wharf is the SRR 2010 Conference accommodation partner and is offering a conference accommodation rate of A\$245 per room per night for the dates between 31 August 2010 – 4 September 2010.

**There are limited rooms available so you should book early.**

**Final bookings must be made by 24 August 2010.**

To receive your conference accommodation rate please visit the conference web site, [www.srr-otek.com.au](http://www.srr-otek.com.au), and follow the Hilton online accommodation booking process.

For accommodation enquiries please contact the Hilton Melbourne South Wharf direct on +61 (0)3 9027 2000.





# Sustainable Risk Rationalisation Conference 2010

An International Learning Experience

2 & 3 September 2010

Melbourne Convention and Exhibition Centre

## WHO IS OTEK?



OTEK is an environmental, engineering and remediation consultancy company established in 1991 whose foundation was based on petroleum hydrocarbon assessment and remediation projects. Since that time OTEK services have expanded to embrace all aspects of the environmental consultancy solutions sector.

Our strategically located offices ensure our ability to service our customers right around Australia as well as within the Asia Pacific rim.

OTEK staff are an innovative and dynamic team of professionals with extensive experience, who pride themselves in offering quality and practical environmental solutions to the petroleum, chemical, agricultural, communication, utility, defence, aviation, transport, marine, manufacturing and mining industries throughout the region.

OTEK's core services cover a number of areas including:

- Environmental Consulting
- Remediation Consulting, Design and Construction
- Engineered Risk Solutions
- Auditing
- Greenhouse / Sustainability Consulting
- Positive Liability Transfer (PLT)
- Sustainability
- Outsourcing
- OH&S
- OTEK Live

[www.otek.com.au](http://www.otek.com.au)

## WHO IS RTM?

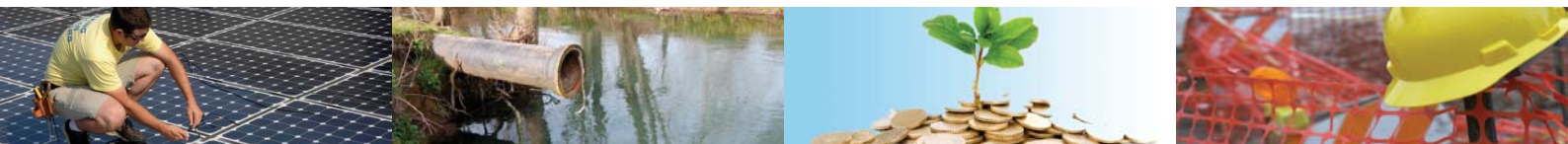


RTM Communications, Inc., is a dynamic creator/producer of conferences focused on environmental risk management and sustainable development issues associated with business and real estate transactions.

RTM Communications has been producing environmental finance and risk and insurance management conferences since 1987, first as part of its Risk Management Technologies, Inc., consulting entity, then from 1990 as a stand-alone conference, training and specialty publishing and webinar firm.

RTM is also the co-founder of the Environmental Bankers Association (EBA) in the United States. The EBA is a non-profit trade association that represents the financial services industry and protect and preserve bank net income and assets from environmental exposure and liability resulting from lending and trust activities through the employment of environmental risk management in the U.S. and worldwide. The EBA enhances visibility and awareness of environmental risk management's global role in promoting environmentally sound lending and fiduciary activities, sustainable development, and new concepts of social responsibility for the financial services industry.

[www.rtmcomm.com](http://www.rtmcomm.com)





# Sustainable Risk Rationalisation Conference 2010

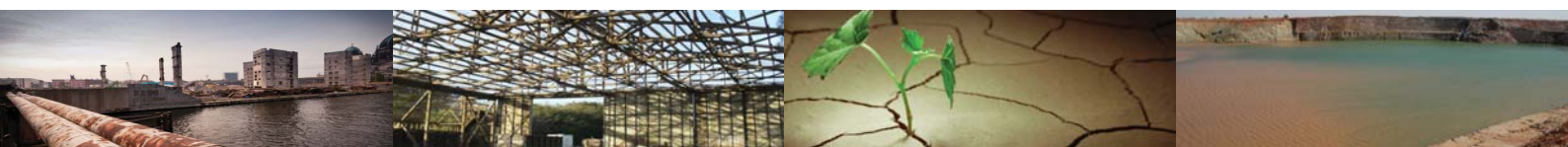
## An International Learning Experience

2 & 3 September 2010  
Melbourne Convention and Exhibition Centre

### REGISTRATION RATES AND INCLUSIONS

NOTE: All Conference Registration fees are in Australian Dollars inclusive of 10% Goods and Services Tax (GST). GST is applicable to international delegates as the event is in Australia.

Registration Type	Inclusions	Cost (plus GST)
Full Registration	<ul style="list-style-type: none"> <li>Attendance at all conference sessions and trade exhibition (2 - 3 September)</li> <li>Satchel including program and conference proceedings</li> <li>Morning tea (Thursday and Friday)</li> <li>Lunch (Thursday and Friday)</li> <li>Afternoon tea (Thursday and Friday)</li> <li>Welcome Cocktail Party (1 ticket, Wednesday 1 September)</li> <li>Conference Dinner (1 ticket, Thursday 2 September)</li> </ul>	A\$1,475 plus 10% GST <b>= A\$1,622.50</b>
Day One Registration	<ul style="list-style-type: none"> <li>Attendance at conference sessions on Day One and trade exhibition (Thursday 2 September)</li> <li>Satchel including program and conference proceedings</li> <li>Morning tea on Day One (Thursday 2 September)</li> <li>Lunch on Day One (Thursday 2 September)</li> <li>Afternoon tea on Day One (Thursday 2 September)</li> <li>Conference Dinner (1 ticket, Thursday 2 September)</li> </ul>	A\$825 plus 10% GST <b>= A\$907.50</b>
Day Two Registration	<ul style="list-style-type: none"> <li>Attendance at conference sessions on Day Two and trade exhibition (Friday 3 September)</li> <li>Satchel including program and conference proceedings</li> <li>Morning tea on Day Two (Friday 3 September)</li> <li>Lunch on Day Two (Friday 3 September)</li> <li>Afternoon tea on Day Two (Friday 3 September)</li> </ul>	A\$775 plus 10% GST <b>= A\$852.50</b>
Student Full Registration (maximum 10 available)	<ul style="list-style-type: none"> <li>Attendance at all conference sessions and trade exhibition (2 - 3 September)</li> <li>Satchel including program and conference proceedings</li> <li>Morning tea (Thursday and Friday)</li> <li>Lunch (Thursday and Friday)</li> <li>Afternoon tea (Thursday and Friday)</li> <li>Please note attendance at the Welcome Cocktail Party and Conference Dinner is not included in student price. Tickets for these functions can be purchased separately (please see below)</li> </ul>	A\$500 plus 10% GST <b>= A\$550</b>





# Sustainable Risk Rationalisation Conference 2010

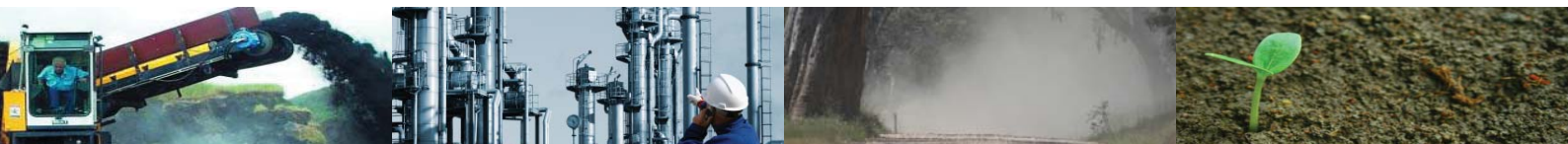
An International Learning Experience

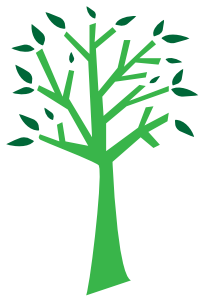
2 & 3 September 2010

Melbourne Convention and Exhibition Centre

## REGISTRATION RATES AND INCLUSIONS

Registration Type	Inclusions	Cost (plus GST)
Student Day One Registration (maximum 10 per day)	<ul style="list-style-type: none"> <li>Attendance at conference sessions on Day One and trade exhibition (2 September)</li> <li>Satchel including program and conference proceedings</li> <li>Morning tea on Day One (Thursday)</li> <li>Lunch on Day One (Thursday)</li> <li>Afternoon tea on Day One (Thursday)</li> <li>Please note attendance at the Welcome Cocktail Party and Conference Dinner is not included in student price. Tickets for these functions can be purchased separately (please see below)</li> </ul>	<p>A\$300 plus 10% GST</p> <p><b>= A\$330</b></p>
Student Day Two Registration (maximum 10 per day)	<ul style="list-style-type: none"> <li>Attendance at conference sessions on Day Two and trade exhibition (3 September)</li> <li>Satchel including program and conference proceedings</li> <li>Morning tea on Day Two (Friday)</li> <li>Lunch on Day Two (Friday)</li> <li>Afternoon tea on Day Two (Friday)</li> </ul>	<p>A\$300 plus 10% GST</p> <p><b>= A\$330</b></p>
Additional Conference Dinner Ticket (maximum 1 per registered delegate)	<ul style="list-style-type: none"> <li>Attendance at Conference Dinner (1 ticket, Thursday 2 September)</li> </ul>	<p>A\$155 plus 10% GST</p> <p><b>= A\$170.50</b></p>
Additional Lunch Ticket (Day Two) (maximum 1 per registered delegate)	<ul style="list-style-type: none"> <li>Attendance at Lunch on Day Two (1 ticket, Friday 3 September)</li> </ul>	<p>A\$131.82 plus 10% GST</p> <p><b>= A\$145</b></p>
Additional Welcome Cocktail Party Ticket (maximum 1 per registered delegate)	<ul style="list-style-type: none"> <li>Attendance at Welcome Cocktail Party (1 ticket, Wednesday 1 September)</li> </ul>	<p>A\$70 plus 10% GST</p> <p><b>= A\$77</b></p>





# Sustainable Risk Rationalisation Conference 2010

## An International Learning Experience

2 & 3 September 2010

Melbourne Convention and Exhibition Centre

Brought to you by



Partnered with



### DELEGATE REGISTRATION FORM

Please complete one form for each delegate. Forms will **not** be processed without payment and acceptance of Terms & Conditions. Student Registration must attach proof of full-time student status, i.e. photocopy of student card. Please complete all required fields \*

#### Delegate Information

Title\*: \_\_\_\_\_ First Name\*: \_\_\_\_\_ Surname\*: \_\_\_\_\_

Badge Name: \_\_\_\_\_ (only if different from above)

Organisation\*: \_\_\_\_\_ Position\*: \_\_\_\_\_

Mailing Address\*: \_\_\_\_\_ Suburb/City\*: \_\_\_\_\_

State\*: \_\_\_\_\_ Zip/Postal Code\*: \_\_\_\_\_ Country\*: \_\_\_\_\_

Phone\*: (\_\_\_\_) \_\_\_\_\_ Fax: (\_\_\_\_) \_\_\_\_\_ Mobile: \_\_\_\_\_

Email address\*: \_\_\_\_\_ (all event correspondence will go to this address)

Special requirements (e.g. dietary): \_\_\_\_\_

#### Conference Registration

Payment will be in Australian Dollars (AUD) and includes the Goods & Services Tax, required by the Australian Federal Government (GST is applicable to international delegates as the event is held in Australia).

Full Registration A\$1,475 + 10% GST = A\$1,622.50 Sub Total A\$ \_\_\_\_\_

Day One Registration A\$825 + 10% GST = A\$907.50 Sub Total A\$ \_\_\_\_\_

Day Two Registration A\$775 + 10% GST = A\$852.50 Sub Total A\$ \_\_\_\_\_

Student Full Registration A\$500 + 10% GST = A\$550 Sub Total A\$ \_\_\_\_\_

Student Day One Registration A\$300 + 10% GST = A\$330 Sub Total A\$ \_\_\_\_\_

Student Day Two Registration A\$300 + 10% GST = A\$330 Sub Total A\$ \_\_\_\_\_

Additional Conference Dinner Ticket A\$155 + 10% GST = A\$170.50 Sub Total A\$ \_\_\_\_\_

Participant Name: \_\_\_\_\_

Additional Day Two Lunch Ticket A\$131.82 + 10% GST = A\$145 Sub Total A\$ \_\_\_\_\_

Participant Name: \_\_\_\_\_

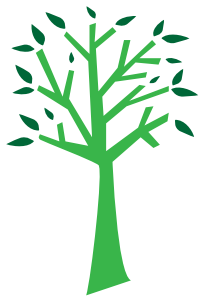
Additional Welcome Cocktail Party Ticket A\$70 + 10% GST = A\$77 Sub Total A\$ \_\_\_\_\_

Participant Name: \_\_\_\_\_

Total A\$ \_\_\_\_\_ \*including GST

Please tick here to register your interest to attend the optional Sightseeing Program.  
*The Sightseeing Program is NOT included in delegate registrations. The Sightseeing Program is to be finalized.*

Please indicate if you will be attending the  Welcome Cocktail Party  Conference Dinner  Day Two Lunch  
*Please see Registration Inclusions for your Social & Networking Function entitlements.*



# Sustainable Risk Rationalisation Conference 2010

An International Learning Experience

2 & 3 September 2010

Melbourne Convention and Exhibition Centre

Brought to you by



Partnered with



## Payment Information

This document becomes a tax invoice for GST purposes upon completion of payment.

Cheque: Payable to OTEK Australia Pty Ltd

SRR 2010 Conference  
Level 1, 222 St Kilda Road  
St Kilda VIC 3182

Credit Card: Credit Card Type  Master Card  Visa

Name of Cardholder: \_\_\_\_\_

Card Number: \_\_\_\_\_

Expiry Date (mm/yy): \_\_\_\_\_

Security Code (CCV): \_\_\_\_\_ CCV – The last 3 digits on the back of your credit card

Following receipt of your conference registration your credit card will be charged within the next five (5) business days. The charge will appear on your Statement as OTEK Australia Pty Ltd.

EFT: Payable to OTEK Australia Pty Ltd

Description Field: *insert SRR and registrant surname*

Bank Name: NAB

BSB: 083 170

A/C: 536 717 720

Online: Please visit [www.srr-otek.com.au](http://www.srr-otek.com.au)

## Privacy Disclosure Statement\*

Any information provided by you in relation to this conference is being collected by OTEK Australia Pty Ltd ABN 32 054 371 596 and will be held in strict confidence. The security of your information is important to us. Under the Australian Privacy Act, only Delegate Names, Organisation and Delegate Positions will be provided to delegates and sponsors as identified. OTEK Australia Pty Ltd protects the privacy and security of personal and payment information provided by you. When you provide sensitive information (such as credit card numbers), OTEK passes them on to the OTEK Accounts Department in order to be processed as required. OTEK Australia Pty Ltd never permanently store complete Credit Card details.

## Cancellation & Refund Policy

If a cancellation is made before 5 July 2010, OTEK will process a refund, less a processing fee of 10% per registration. If a cancellation is requested between 5 July 2010 and 20 August 2010, OTEK will process a refund, less a processing fee of 50% per registration. Cancellation requests received after 20 August 2010 are nonrefundable per registration. Registered attendees may transfer their registrations to another individual from the same company at any time as long as payment has been received. All cancellation and transfer requests must be sent in writing via mail or fax or submitted through the online conference web site Contact Us form.

## Delegate Registration Terms & Conditions for the Sustainable Risk Rationalisation Conference 2010

Clause 1. OTEK AUSTRALIA PTY LTD reserves the right to alter the program or presenter(s) without further notice, however best endeavour will be made to ensure the program is run as advertised.

Clause 2. Registrations must be paid in full and cannot be processed without payment. Registrants will lose payment in the event of non-attendance, unless cancellation is made in accordance with the Cancellation & Refund Policy.

Clause 3. Limitation of liability. OTEK Australia Pty Ltd liability does not exceed the delegate payment. In no event shall OTEK Australia Pty Ltd be liable to anyone for any indirect, punitive, special, exemplary, incidental, consequential or other damages of any type or kind (including loss of data, revenue, profits, use or other economic advantage) arising out of, or in any way connected with the event, including but not limited to the use or inability to attend the conference.

I agree for OTEK Australia Pty Ltd to use my information as the above Privacy Disclosure Statement

I do not agree for OTEK Australia Pty Ltd to use my information as the above Privacy Disclosure Statement

I accept the above Privacy Disclosure Statement, Cancellation & Refund Policy, and Delegate Terms & Conditions\*

Please fax completed forms to +61 (0)3 9593 8555 or post to SRR 2010, Level 1, 222 St Kilda Road, St Kilda VIC 3182

Registration enquiries: Ph: +61 (0)3 9525 5155 or 'Contact Us' form on the conference web site.



# Sustainable Risk Rationalisation Conference 2010

## An International Learning Experience

2 & 3 September 2010  
Melbourne Convention and Exhibition Centre

### CONTACT INFORMATION

#### Conference Organisers



OTEK Australia  
Level 1, 222 St Kilda Road  
St Kilda VIC 3182  
Australia

Mike Minear – National Marketing Manager  
OTEK Australia  
Phone: +61 3 9525 5155  
Fax: +61 3 9593 8555  
Web: [www.srr-otek.com.au](http://www.srr-otek.com.au)  
Email: [contact@srr-otek.com.au](mailto:contact@srr-otek.com.au)

Tanya Hofman – National Marketing Coordinator  
OTEK Australia  
Phone: +61 3 9525 5155  
Fax: +61 3 9593 8555  
Web: [www.srr-otek.com.au](http://www.srr-otek.com.au)  
Email: [contact@srr-otek.com.au](mailto:contact@srr-otek.com.au)

#### Conference Partners



RTM Communications Inc.  
510 King St, Suite 410  
Alexandria, VA 22314  
USA

Tacy Telego - Vice President  
RTM Communications Inc.  
Phone: +01 703 549 0977  
Fax: +01 703 548 5945  
Web: [www.rtmcomm.com](http://www.rtmcomm.com)  
Email: [tacytelego@rtmcomm.com](mailto:tacytelego@rtmcomm.com)

Please visit the conference web site at [www.srr-otek.com.au](http://www.srr-otek.com.au) for more information.

Brought to you by



Partnered with



Proudly sponsored by



SMEC



Proudly supported by



Version 2-16 050810



An International Learning Experience

[srr-otek.com.au](http://srr-otek.com.au)